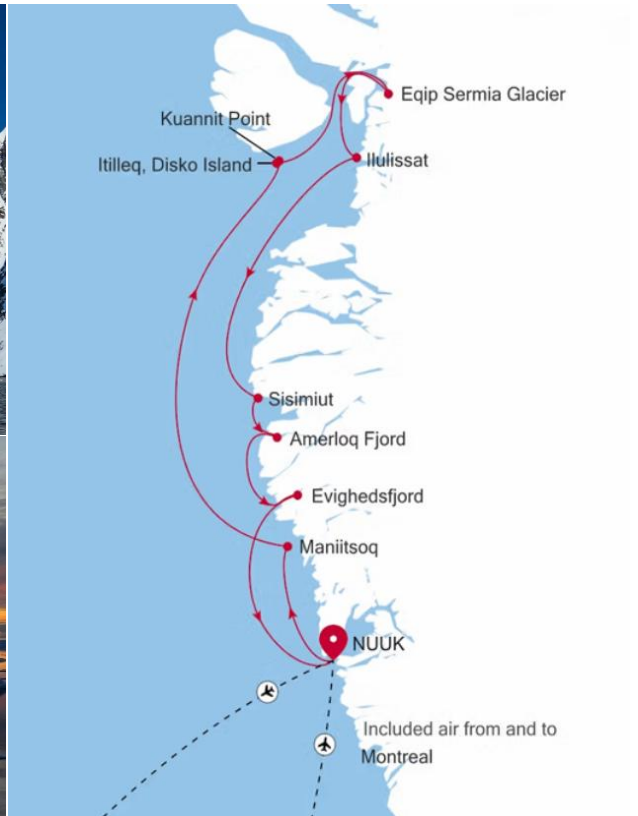


# GREENLAND 8 DAYS

26 July – 2 August 2026



SILVERSEA®



# ITINERARY

**DAY 1: 26 JUL 2026**

**ARRIVAL IN NUUK, GREENLAND – EMBARKATION**

**SUN**

XX:XX  
XX:XX  
XX:XX  
XX:XX

**DEPARTURE FROM COPENHAGEN BY TBA TO NUUK**  
**ARRIVAL IN NUUK BY TBA FROM COPENHAGEN**  
**TRANSFER TO PIER FOR EMBARKATION**  
**CHECK IN ON BOARD**

In the bustling capital city of Greenland, you could be forgiven for forgetting you are in such a vast and isolated country. Nuuk is Greenland's economic and social hub, home to more than a third of Greenland's population, and although it feels like a world capital, scratch the surface, and a uniquely Greenlandic character can be found underneath. Nuuk Cathedral overlooks the gorgeous old Colonial Harbour district and the Greenland National Museum, resting place of the legendary Qilakitsoq mummies, the true highlight of the museum's archaeological collection. Above the Colonial Harbour sits downtown Nuuk, with lines of Scandi-style apartments, a bustling shopping district, the Greenlandic Parliament, Nuuk City Hall (which welcomes visitors to see its artwork), and even outdoor cafes selling locally produced food and beer. These nods to modernity compete for space with local artisan boutiques, the meat market selling the catch from Nuuk's vast fjord-lands, and the stunning Katuaq Cultural Centre, where blockbuster movies, as well as local and foreign performers, entertain the people of Nuuk. Although Nuuk has long been a melting pot of Danish and Greenlandic ideas, this is a city where Greenland displays its sophistication, with the Country's only traffic lights, roundabouts, and University. Most of all, expect to find a multitude of friendly people who are proud of who they are, and equally proud of the city they call home.

**DAY 2: 27 JUL 2026**

**MANIITSOQ, GREENLAND**

**MON**

**HIGHLIGHT:** Manittsoq Exploration and Museum

Located in the central part of Greenland's western coast, Maniitsoq is Greenland's sixth-largest town, and home to less than 2,700 inhabitants. The main attractions are the small museum and old cemetery at the northern end of town. At the community hall local artists and artisans usually exhibit some of their carvings and beadwork. The beadwork pieces are not created just as souvenirs for visitors - the national dress of the West-Greenlandic women uses an elaborately beaded collar. Fishing trips and even heli-skiing on nearby mountains are considered Maniitsoq's other assets. Its local name (meaning "place of rugged terrain") contrasts somewhat with the name given by the Danish in 1782 (New Sugarloaf).

**DAY 3: 28 JUL 2026**

**ITILLEQ, DISKO ISLAND, GREENLAND**

**TUE**

**HIGHLIGHT:** Expedition Activities with Silversea Expedition Team

Land on an under-explored part of one of Greenland's most fascinating islands. To the southwest of Disko Island, Itilleq is a breathtaking landing site, tempting explorers with an array of extraordinary geological features. Separate from the small coastal settlement of Itilleq, nearly 200 miles south of here, Disko Island's Itilleq is a truly remote place to explore. Researchers visit to study the beach ridges, rising from the unexpectedly green shore, shaped by centuries of glacial.

Encounter basaltic cliffs and formations, which demonstrate this volcanic island's creative geothermal forces. Inland, discover truly spectacular waterfalls and canyons carved through basaltic columns. Crunch along hiking trails that reveal panoramic vistas of the emerald-painted wilderness. You'll be rewarded with views from elevated ridgelines and dramatic cliff tops - promising a sweeping overview of disko bay's icy waters, where drifting icebergs speckle the horizon. Additional waterfalls thunder inland, their meltwater tumbling over dark rock. Adventure onto one of greenland's most remote locations, landing at this seldom-visited site with silversea's expert team, who will share their knowledge and insights throughout.

**DAY 4: 29 JUL 2026**

**EQIP SERMIA GLACIER, GREENLAND**

**WED**

**HIGHLIGHT:** Expedition Activities with Silversea Expedition Team

Scattering chunks of sea ice like confetti, Equip Sermia Glacier's 2-mile-wide wall of ice is alive with thrilling activity. Known as the Calving Glacier, this immense formation towers up to 550 feet above the surface. Cracks and rumbles echo through the air from Equip Sermia Glacier, one of the most active in the Northern Hemisphere. Enjoy the show, as dramatic collapses send mini- icebergs tumbling across the surface and the ship rolls gently on the ensuing waves. Explore this incredible glacier up close, immersed in pure silence, with only the calls of seabirds and the murmurings of the ice breaking the quiet. Equip Sermia Glacier is retreating quickly, and this rapid movement drives the frequency of its calving events. Found at the terminus of Eqi Fjord, the compacted flow of ancient ice mass spills down through black and white mountains from its roots in the Greenland Ice Sheet - the second-largest body of ice in the world after Antarctica, covering 80% of the island. The deep blues and turquoise hues are caused by centuries of compression. Icy sculptures from Equip Sermia Glacier and nearby Jakobshavn Glacier and Kangilerngata Sermia Glacier drift toward Disko Bay, where fin, humpback, and minke whales breach and roll through the lively waters.

**DAY 5: 30 JUL 2026**

**ILULISSAT, GREENLAND**

**THU**

**HIGHLIGHT:** Ilulissat Iceberg Cruise and Ilulissat Town Walk

Known as the birthplace of icebergs, the Ilulissat Icefjord produces nearly 20 million tons of ice each day. In fact, the word Ilulissat means "icebergs" in the Kalaallisut language. The town of Ilulissat is known for its long periods of calm and settled weather, but the climate tends to be cold due to its proximity to the fjord. Approximately 4,500 people live in Ilulissat, the third-largest town in Greenland after Nuuk and Sisimiut. Some people here estimate that there are nearly as many sled dogs as human beings living in the town that also boasts a local history museum located in the former home of Greenlandic folk hero and famed polar explorer Knud Rasmussen.

**DAY 6: 31 JUL 2026**

**SISIMIUT, GREENLAND - AMERLOQ FJORD, GREENLAND**

**FRI**

**HIGHLIGHT:** Sisimiut Town Walk with Greenlandic Tasting

Sisimiut (The People of the Fox Holes) is Greenland's second city, the largest Arctic City in North America, and a hub between the warmer South and the frozen North of the country. With a young, dynamic population, including students from all over the country, Sisimiut is one of the fastest-growing cities in Greenland. Inhabited for more than four and a half thousand years, the Danish Colonial Era saw the

rapid development of the city into a trade center, and the old buildings and artifacts can be seen at Sisimiut Museum, a collection of beautifully restored buildings displaying everything from ancient turf houses to modern Inuit art. The local artisans are considered some of the best in Greenland and often sell their wares direct from their communal workshop in the harbor, where they barter with hunters for raw materials. Today, modern industry focuses on processing seafood and shipping; KNI, the state-run chain of general stores operating in even the most remote settlements is based in Sisimiut. Most residents still live in the colorful wooden houses Greenland is so well known for. Sisimiut's vast backcountry offers excellent opportunities for hiking and fishing, and the locals often use sled dogs or snowmobiles to get around their vast mountainous playground during the long winters. In the summer, one can walk as far as Kangerlussuaq International Airport, a trail also used for the grueling Polar Circle Marathon, one of the toughest endurance events in the world.

**HIGHLIGHT:** Expedition Activities with Silversea Expedition Team

Sail into Amerloq Fjord, an evocative waterway, immersed in a protected landscape of soaring mountains, arctic wilderness, and deep fjords. Located in western Greenland's Qeqqata municipality, this scenic fjord lies above the Arctic Circle, with its waters flowing out into the Davis Strait. Along the rocky shores, hiking trails meander by the water's edge, and whales can occasionally be spotted in the calm waters. Huddled over the fjord's entrance is the cheerily painted town of Sisimiut, Greenland's second-biggest settlement. While cruising along 25 miles of fjord waters, you'll also encounter Assaqtuaq - a ghostly village that was abandoned and left to ruin in 1970. Some of the fading wooden buildings have recently had new life breathed into them for educational purposes. Sail the calm waters to reach Sarfannguit, a beautiful fishing village consisting of an assortment of small wooden houses popping with bright colors against the moody landscape. Located on an island between two fjords, Sarfannguit forms part of a UNESCO World Heritage Site, designated in 2018 to preserve the cultural and historical legacy of the Inuit. For more than 4,200 years, the Inuit have hunted and fished in these landscapes, maintaining a deep connection to the land and sea. Today, you can visit the approximately 100 residents who live in Sarfannguit to learn of their heritage, as the barks of their excited sled dogs echo over the waters.

**DAY 7: 1 AUG 2026                      EVIGHEDSFJORD, GREENLAND**  
**SAT**

**HIGHLIGHT:** Expedition Activities with Silversea Expedition Team

Evighedsfjord (Eternity Fjord) is a large fjord northeast of Kangaamiut in southwest Greenland. The fjord has a length of 75 kilometers and several branches with numerous glaciers coming down from the Maniitsoq Ice Cap to the north can be seen. The Evighedsfjord has several bends and whenever the ship reaches the supposed end the fjord continues in another direction and seems to go on forever. Qingua Kujatdleq Glacier is at its southeastern end. At the northwestern end, a U-shaped valley has seven glaciers coming down from the mountains but not reaching the water. The glaciers had their maximum extent around the year 1870 and have gone through several cycles of advance and retreat. The mountains on either side of the fjord can reach in excess of 2,000 meters and the fjord has a depth of up to 700 meters. Evighedsfjord's snowline is at 1,100 meters and the Evighedsfjord region is famous as one of Greenland's best heli-skiing areas.

**DAY 8: 2 AUG 2026                      DISEMBARKATION IN NUUK - DEPARTURE TO COPENHAGEN**  
**SUN**



XX:X	DISEMBARKATION IN
XX:X	NUUK TRANSFERTO
XX:X	AIRPORT CHECKIN AT
XX:X	THE AIRPORT
XX:X	DEPARTURE NUUK BY <b>TBA</b> TO

In the bustling capital city of Greenland, you could be forgiven for forgetting you are in such a vast and isolated country. Nuuk is Greenland's economic and social hub, home to more than a third of Greenland's population, and although it feels like a world capital, scratch the surface, and a uniquely Greenlandic character can be found underneath. Nuuk Cathedral overlooks the gorgeous old Colonial Harbour district and the Greenland National Museum, resting place of the legendary Qilakitsoq mummies, the true highlight of the museum's archaeological collection. Above the Colonial Harbour sits downtown Nuuk, with lines of Scandi-style apartments, a bustling shopping district, the Greenlandic Parliament, Nuuk City Hall (which welcomes visitors to see its artwork), and even outdoor cafes selling locally produced food and beer. These nods to modernity compete for space with local artisan boutiques, the meat market selling the catch from Nuuk's vast fjord-lands, and the stunning Katuaq Cultural Centre, where blockbuster movies, as well as local and foreign performers, entertain the people of Nuuk. Although Nuuk has long been a melting pot of Danish and Greenlandic ideas, this is a city where Greenland displays its sophistication, with the Country's only traffic lights, roundabouts, and University. Most of all, expect to find a multitude of friendly people who are proud of who they are, and equally proud of the city they call home.

\*\*\*\*\*

<b>Expedition Cruise</b>	: Silversea
<b>Sailing dates:</b>	: 26 July – 02 Aug 2026 (7N/8D)
<b>Cabin Type:</b>	: Classic Veranda Suite Cabin (27 sqm. including veranda)
<b>Selling Price Per Pax</b>	: <b>13,400 USD / pax</b>

#### **THE QUOTATION INCLUDES:**

- **All voyage night according to the program**
- **Return flight tickets Copenhagen – Nuuk – Copenhagen**
- Expert lectures and activities including guided Zodiac, land and sea tours
- Expedition gear such as parka, backpack, and water bottle
- Butler service in every suite
- Personalized service — nearly one crew member for every guest
- In-suite bar stocked with preferred beverages and spirits
- Choice of restaurants, diverse cuisine, open-seating dining
- Unlimited pour of champagne, spirits and up to 50 wines from the Silversea Cellar
- Coffee, specialty coffees, fine teas, sodas, and sparkling waters
- Enrichment lectures and onboard entertainment
- Unlimited access to fitness center, spa's sauna, steam room, and relaxation areas (according to opening hours)
- Complimentary Wi-Fi
- Self-service laundrettes and supplies
- Onboard gratuities
- Port taxes and fee

### **THE QUOTATION EXCLUDES:**

- International flight tickets
- Travel insurance
- Cancellation insurance
- Single room supplement and stateroom upgrade
- Pre and post tour and hotel accommodation in Copenhagen or Nuuk (land part)
- Airport transfer from Nuuk airport – port – Nuuk airport

### **IMPORTANT NOTES:**

- Single supplement is to be advised by Silversea team

### **TERMS OF PAYMENT:**

- **First deposit:** 30% due at the time of booking
- **Second deposit:** 30% due on 31 January 2026 (Flexible Date)
- **Third deposit:** 30% due on 31 March 2026
- **Final payment:** Due on 21 June 2026, based on the final calculation of our quotation

\*Please kindly be informed that all deposits are non-refundable once paid.

### **REMARKS:**

- All hotels are quoted based on contracted rates.
- The offer is subject to the availability of the cabins at the time of the booking.
- We reserves the right to charge supplements during trade fairs, congresses or other major event